



Compressor
Voltage Code : FZ

AE4460U-FZ1C

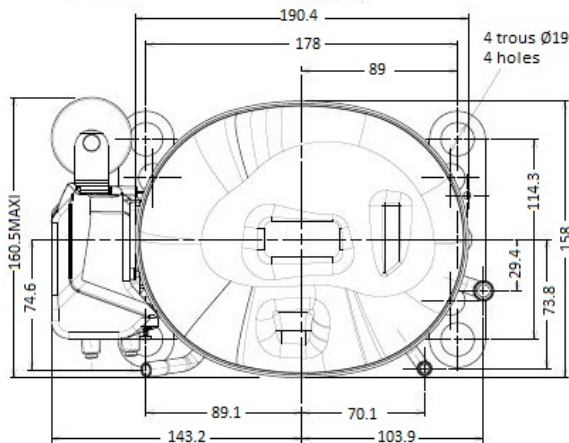
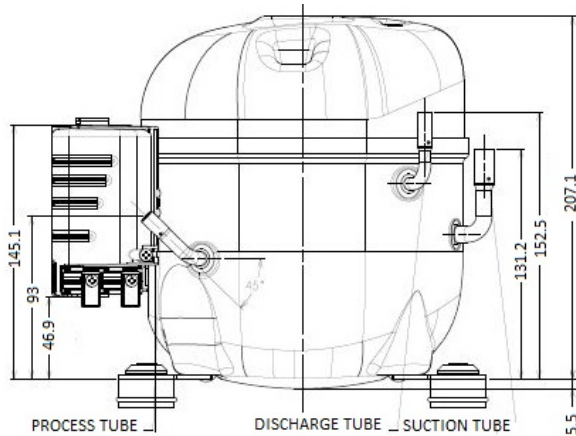
High Temp. Commercial (HP)

220 - 240V 1~ 50 Hz

R290

AE4460U-FZ1C_BR

Conditions	Frequency	Nominal Cooling Capacity		Sound Power ISO3745 / ISO 3743-1
		Watts	BTU/h	
EN12900 / R290	50 Hz	1359	4634	65 dBA



* EN12900 : T°Cond. 50.0°C / T°Evap. 5.0°C / T°Return gas temp.. 20.0°C
T°Subcooling. 0.0K

Certificates :



Displacement (cc)	12.01
Net Weight (Kg)	11.3
Oil Quantity (cc)	380.0
Oil Type	Polyolester
Expansion Device	Capillary_Tube/Expansion_Valve
Cooling	Fan
Main Winding (Ohm)	4.57
Start Winding (Ohm)	19.95
Current	
RLA (A)	3.66
LRA (A)	17.5
Electrical Equipment	CSIR
Overload	MRA58181
Time Check	6.5s - 15s / 11.50 A
Open Temp	130° C
Close Temp	52° C
Start Capacitor	65 µF / 330 V
Current Relay	9660C***-167
Pick Up	11 A
Drop Out	9.2A
Refrigerating connection for OD	
Suction Tube	9.5 (3/8")
Discharge Tube	6.35 (1/4")
Process Tube	6.35 (1/4")

Note : Tecumseh reserves the right to change information contained in this document without notification.



Tecumseh

AE4460U-FZ1C	Tension FZ : 220 - 240V 1~ 50 Hz
---------------------	---

Les performances sont données dans les **conditions EN12900** :
 Condition Dew
 The performance data are in **EN12900 conditions** :
 Dew Condition

Gaz aspirés : 20.0 °C
 Sous refroidissement : 0.0 K
 Return gas : 20.0 °C
 Subcooling : 0.0 K

50 Hz R290											
N°3105											
4 T condensation	5 T évaporation	(°C)	-25	-20	-15	-10	-5	0	5	10	15
30	1 P frigorifique	(Watt)	472	617	787	987	1220	1490	1799	2151	2551
	2 P absorbée	(W)	322	350	373	392	408	419	425	428	427
	3 I absorbée	(A)	2.46	2.55	2.63	2.69	2.74	2.78	2.79	2.80	2.79
40	1 P frigorifique	(Watt)		533	688	868	1074	1312	1584	1894	2245
	2 P absorbée	(W)		382	415	443	467	486	501	511	517
	3 I absorbée	(A)		2.62	2.74	2.85	2.94	3.02	3.08	3.13	3.17
50	1 P frigorifique	(Watt)			580	738	918	1124	1359	1626	1930
	2 P absorbée	(W)			453	493	527	557	581	601	616
	3 I absorbée	(A)			2.88	3.03	3.16	3.29	3.39	3.48	3.56
60	1 P frigorifique	(Watt)				601	755	929	1126	1351	1607
	2 P absorbée	(W)				540	587	629	665	696	722
	3 I absorbée	(A)				3.23	3.41	3.57	3.72	3.86	3.98



© 2019 Tecumseh Products Company
All rights reserved

1 = cooling capacity 2 = power input 3 = current 4 = condensing temperature 5 = evaporating temperature

Nota : Tecumseh se réserve le droit de modifier les informations contenues dans ce document sans préavis.
Note : Tecumseh reserves the right to change information contained in this document without notification.